



Residential Fiber Internet
Powered by AT&T

- **UNLIMITED DATA - No data caps, no overage fee**
- **No Landline Required**
- **No Installation fees or hidden fees**
- **Wireless Modem included**
- **Everyday Rate - Not an Introductory Rate**

Why choose Milwaukee PC as your Internet provider?

Installation

Us **NO CHARGE**

vs Them **\$\$\$**

Wi-Fi

Us **NO CHARGE**

vs Them **\$**

Price increase after 1 year

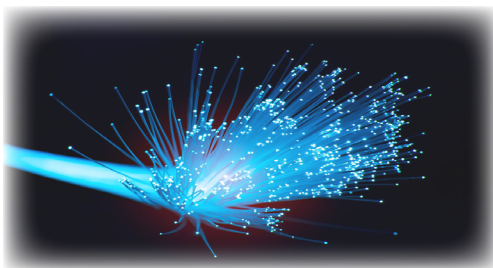
Us **NO**

vs Them **\$\$**

When you compare us vs. them - you save about \$380* per year!
No rate increases, no extra fees, just straight forward pricing!

*When comparing our everyday rate vs. another local provider with Wi-Fi option, standard rate for 300Mb plan, no discounts or special offers. Based on web survey on 2024-06-27

High Speed Fiber Internet



up to **5Gb** Fiber
\$250
per month, speeds up to 5Gb down/up

up to **2Gb** Fiber
\$150
per month, speeds up to 2Gb down/up

up to **1Gb** Fiber
\$90
per month, speeds up to 1Gb down/up

up to **500Mb** Fiber
\$70
per month, speeds up to 500Mb down/up

up to **300Mb** Fiber
\$60
per month, speeds up to 300Mb down/up

Fiber not available in your area?

We may still be able to offer dynamic broadband service with speeds up to 75Mb

up to **75Mb**
\$60
per month, speeds up to 75Mb down/8Mb up

Service and speeds are subject to availability. Internet speeds represent maximum network service capability speeds. Actual customer speeds may vary due to wiring, distance, and other factors.



Available in more locations than ever!
Check with a sales associate to determine if we can service your address.

New Account Term is a 1-year commitment. Early termination fee is \$100 or remainder of commitment, whichever is less. At the end of term, then current rate applies. Promotional offers are only available to new internet customer accounts. A missed appointment fee of \$100 will be charged if insufficient notice is given of a conflict for technician installation or repair. Existing Milwaukee PC Legacy Internet Service customers may upgrade to Residential Internet Service 2.0. This would require a new 1-year commitment and modem replacement & installation, see a sales associate for more information. Billing begins on service activation date. Service Plans not available in all areas. Actual downstream and upstream throughput speeds will vary. Acceptance of Terms of Service required. Other restrictions apply. Access speed or sync rate is measured between network interface device at customer's location and the Central Office or Remote Terminal. The actual speed achieved will depend on several factors, including line conditions and loop length. Milwaukee PC does not guarantee uptime for Internet Service, however uptime is typically 99%. Milwaukee PC is an Internet Service Provider, and as a result is not responsible for structured telephone wiring or equipment. Milwaukee PC is a second tier provider relying on the AT&T network for connectivity. Milwaukee PC does offer a 25-Day cancellation of service from initial activation without penalty. Disconnection of service requires 30 days notice for processing.