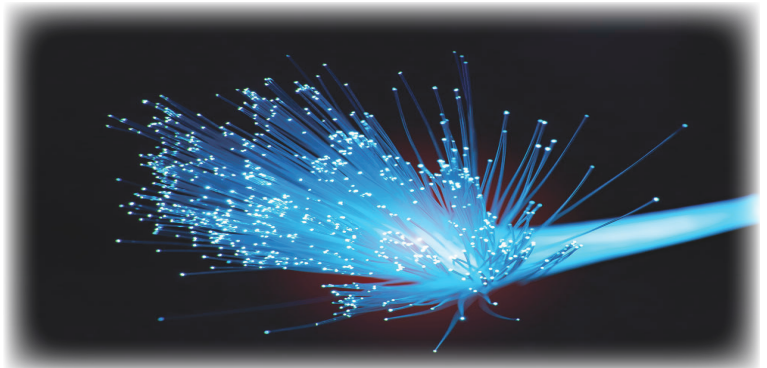


Commercial Internet Service 2.0
Powered by AT&T

- **UNLIMITED DATA - No data caps, no overage fee**
- **No Bundling, No Landline Required**
- **No installation fees or hidden fees**
- **Wireless Modem included**
- **Everyday Rate - Not an Introductory Rate**

Commercial Fiber Internet



up to **2Gb (2000MB) Fiber**

\$205

per month, speeds up to 2Gb down/up - Static IP add \$15

up to **1Gb (1000MB) Fiber**

\$160

per month, speeds up to 1Gb down/up - Static IP add \$15

up to **500Mb Fiber**

\$120

per month, speeds up to 500Mb down/up - Static IP add \$15

up to **300Mb Fiber**

\$80

per month, speeds up to 300Mb down/up - Static IP add \$15

Service and speeds are subject to availability. Internet speeds represent maximum network service capability speeds. Actual customer speeds may vary due to wiring, distance, and other factors.



How much speed do you need?
Based on common usage requirements for VOIP, we recommend the following:

5MB up/down » For 5 Concurrent VOIP calls

5-10MB up/down » For 10 Concurrent VOIP calls

New Account Term is a 1-year commitment. Early termination fee is \$100 or remainder of commitment, whichever is less. At the end of term, then current rate applies. Promotional offers are only available to new internet customer accounts. A missed appointment fee of \$100 will be charged if insufficient notice is given of a conflict for technician installation or repair. Existing Milwaukee PC Legacy Internet Service customers may upgrade to Commercial Internet Service 2.0. This would require a new 1-year commitment and modem replacement & installation, see a sales associate for more information. Billing begins on service activation date. Service Plans not available in all areas. Actual downstream and upstream throughput speeds will vary. Acceptance of Terms of Service required. Other restrictions apply. Access speed or sync rate is measured between network interface device at customer's location and the Central Office or Remote Terminal. The actual speed achieved will depend on several factors, including line conditions and loop length. Milwaukee PC does not guarantee uptime for Internet Service, however uptime is typically 99%. Milwaukee PC is an Internet Service Provider, and as a result is not responsible for structured telephone wiring or equipment. Milwaukee PC is a second tier provider relying on the AT&T network for connectivity. Milwaukee PC does offer a 25-Day cancellation of service from initial activation without penalty. Disconnection of service requires 30 days notice for processing.

Revised 2023-06-10